

# THE POWER TO PUSH FORWARD



**PROMOUNT**  
— PLOWS

**can-am**





# LEADING PLOW PERFORMANCE

The new ProMount lineup was created for both professional operators and enthusiasts looking to take their tool kit to the next level. Designed to work as efficiently as possible, Can-Am reimagined the plow from frame to blade. There's a ProMount for every Can-Am, plus setups for specific Heavy-Duty use—and a stout quick connect frame mount for unmatched utility and convenience.



## SIMPLE

The Can-Am plow system simplifies plow setup and adapts to many uses. All you need to do is add the blade of your choosing to the mount and push frame required for your vehicle, and finish off with any plow accessories needed.

## STRONG

Work confidently thanks to the sturdy, efficient construction that sets our ProMount plow system apart. Ruggedly built to outperform—just what you'd expect from Can-Am.



## SMART

Smartly engineered to include all must-have features—without compromising performance and ease-of-use—ProMount is the Can-Am of plow systems.





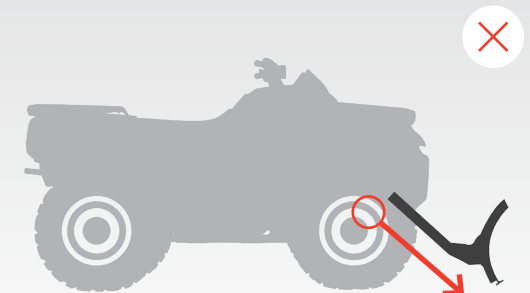
# MOST EFFICIENT MOUNTING SYSTEM

1



Underbelly mounting plate provides the optimal angle of attack for best push strength.

VS



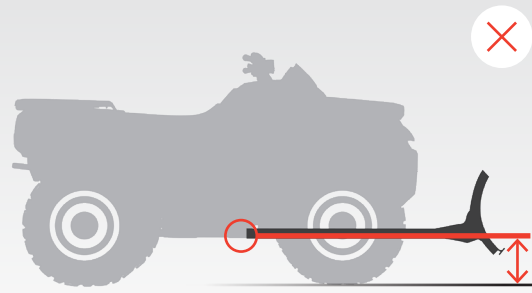
Front mounting returns limited strength.

2



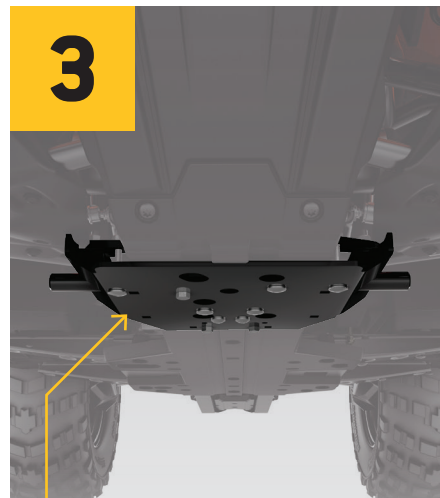
The forward mounted push frame provides industry leading lift height.

VS



Conventional central mount point restricts maximum lift.

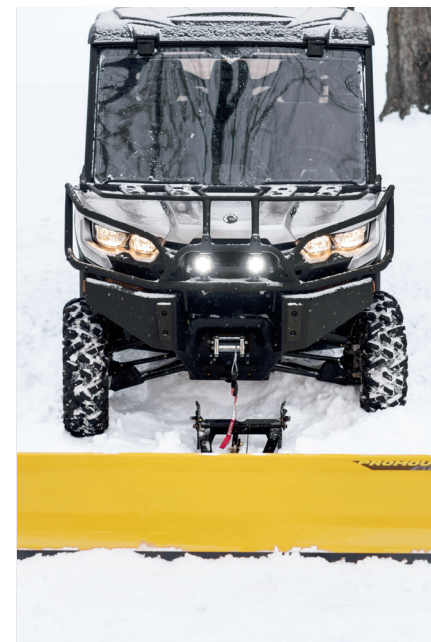
3



Low profile mounting plate has little impact on ground clearance and can be left installed year round.

# CONNECTS WITH A CLICK

Attachable in four easy steps, the Can-Am ProMount plow system is the fastest, easiest way to start plowing and get the job done —minimal effort for maximum result.



1 Drive straight toward the plow.



2 Attach the winch cable to the plow using a guiding hook/roller.



3 Lift the plow until it clips onto the mounting plate.



4 Remove the winch cable from the guide. You're ready to plow.

NO NEED TO CRAWL UNDER THE VEHICLE EITHER:  
**CONNECT IT AND GET TO WORK!**



# CAN-AM PROMOUNT STEEL PLOW

Made from 12-gauge steel and designed for efficient plowing, the ProMount steel blades are offered in multiple sizes to fit jobs large or small.

## CAN-AM PROMOUNT STEEL PLOW KIT

These kits include: Can-Am ProMount Steel Blade, Push Frame with Quick-Attach System and Mounting Plate

### 54" BLADE

G2, G2L, G2S, Maverick Trail

■ 715005200 • Black  
■ 715005428 • Yellow

**\$819<sup>97</sup>**

### 60" BLADE

G2, G2L, Maverick Trail, Maverick Sport

■ 715005201 • Black  
■ 715005434 • Yellow

**\$849<sup>97</sup>**

### 66" BLADE

G2, G2L, Maverick Trail, Maverick Sport

■ 715005427 • Black  
■ 715005435 • Yellow

**\$879<sup>97</sup>**



### 72" BLADE

Defender, Maverick X3

■ 715006302 • Black  
■ 715006303 • Yellow

**\$1,219<sup>97</sup>**



CREATE  
YOUR  
OWN KIT

by choosing any plow type/length that you'd like for your push frame. **ProMont Push Frames** are compatible with all the blades.

## CAN-AM PROMOUNT STEEL BLADES

- Blades available individually to create your own kit.
- Compatible with Can-Am ProMount Blade accessories to further enhance plow versatility (some plow accessories are not compatible with 54" plows).

### 54" BLADE

- Not compatible with ProMount Drift Cutters and Blade Extensions.
- Clears 50" (127 cm) when plow is fully angled.
- Blade height of 14.75" (37 cm).

G2, G2L, G2S, Maverick Trail

■ 715004472 • Black  
■ 715005316 • Yellow

**\$299<sup>99</sup>**

### 60" BLADE

- Clears 54" (137 cm) when plow is fully angled.
- Blade height of 17" (43 cm).

G2, G2L, Maverick Trail, Maverick Sport

■ 715004202 • Black  
■ 715005317 • Yellow

**\$329<sup>99</sup>**

### 66" BLADE

- Clears 60" (152 cm) when plow is fully angled.
- Blade height of 17" (43 cm).

G2, G2L, Maverick Trail, Maverick Sport

■ 715004473 • Black  
■ 715005318 • Yellow

**\$359<sup>99</sup>**

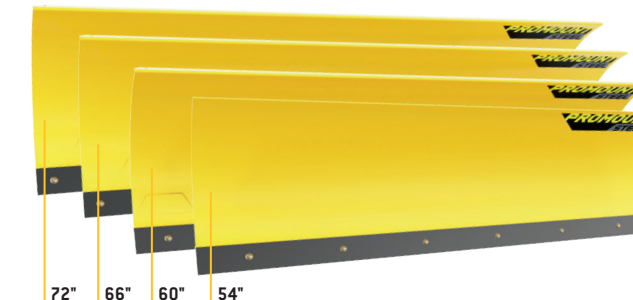
### 72" BLADE

- Clears 66" (168 cm) when plow is fully angled.
- Blade height of 17" (43 cm).

Defender, Maverick X3

■ 715004474 • Black  
■ 715006021 • Yellow

**\$469<sup>99</sup>**





# CAN-AM PROMOUNT FLEX2 PLOW

HMWPE (High Molecular Weight Polyethylene) technology gives Flex2 greater reliability, resistance to impact, and is unaffected by rust or deformation. Resistant for work but flexible in the face of obstacles, the Flex2 blade simplifies work.



CREATE  
YOUR  
OWN KIT

by choosing any plow type/length that you'd like for your push frame. **ProMount Push Frames are compatible with all the blades.**

## CAN-AM PROMOUNT FLEX2 PLOW KITS

These kits include: Can-Am ProMount Flex2 Blade, Push Frame with Quick-Attach System and Mounting Plate

### 60" BLADE

G2, G2L, G2S, Maverick Trail

■ 715005202 - Black

**\$969<sup>97</sup>**



### 72" BLADE

Defender, Maverick X3

■ 715006301 - Black

**\$1,349<sup>97</sup>**



## CAN-AM PROMOUNT FLEX2 BLADES

- Blades available individually to create your own kit.
- Compatible with Can-Am ProMount Blade accessories to further enhance plow versatility.
- Blade height of 17" (43 cm).

### 60" BLADE

- Clears 54" (137 cm) when plow is fully angled.

G2, G2L, G2S, Maverick Trail

■ 715004203 - Black

**\$449<sup>99</sup>**

### 72" BLADE

- Clears 66" (168 cm) when plow is fully angled.

Defender, Maverick X3

■ 715004485 - Black

**\$599<sup>99</sup>**



72" 60"

# YOUR JOB, YOUR CHOICE

Get a custom solution that truly fits the task at hand—with quality components and no cut corners. The ProMount mounting plate, push frame, and blades are a universal system that can be adapted to your specific Can-Am and job site.

## CAN-AM PROMOUNT MOUNTING PLATE

- Required to install the Can-Am ProMount Push Frame with Quick-Attach System.
- Mounting plate precision-designed to stay attached year round without compromising ground clearance.
- Fits with or without Can-Am Skid Plates.

G2, G2L, G2S, Maverick Trail, Maverick Sport

715004338

**\$119<sup>99</sup>**



Defender, Maverick X3

715004484

**\$159<sup>99</sup>**



## CAN-AM PROMOUNT PUSH FRAME WITH QUICK-ATTACH SYSTEM

- Heavy-duty steel tubes designed to withstand the roughest use.
- Mid-mount carriage provides ultimate push strength and traction.
- Designed for maximum plow lift height.
- Features a self aligning quick-attach system, an easy foot release pedal and an ergonomic handle for plow angle adjustment.
- Plow Roller Fairlead and Plow Limit Switch recommended to extend winch cable lifespan.
- Can-Am ProMount Mounting Plate required for installation.
- Blade swivels left or right, 5 positions.
- Large pin designed for easy blade rotation to eliminate dirt and snow buildup at pivot point.

G2, G2L, G2S, Maverick Trail, Maverick Sport

715004339

**\$399<sup>99</sup>**



Defender, Maverick X3

715003910

**\$589<sup>99</sup>**



## CAN-AM PROMOUNT PUSH FRAME EXTENSION

- 12" (30 cm) push frame extension.

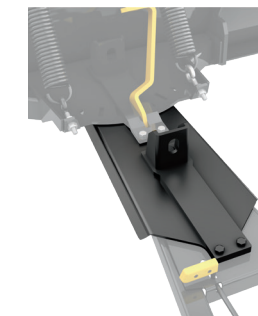
G2, G2L, G2S, Maverick Trail, Maverick Sport, Defender, Maverick X3

715004204

**\$174<sup>99</sup>**



Required when plow is installed with Apache Track system.





# CAN-AM PROMOUNT PLOW ACCESSORIES

## CAN-AM PROMOUNT EDGE MARKERS

- Help locate the edges of your plow.
- Height: 24" (60 cm).
- Sold in pairs.
- Fits: Can-Am ProMount Flex2 60" and Steel 60" and 66" Blades.

G2, G2L, G2S, Maverick Trail, Maverick Sport, Defender, Maverick X  
715004206

**\$49<sup>99</sup>**

## CAN-AM PROMOUNT DRIFT CUTTERS

- Help keep snow in the plow.
- Dimensions: 17" x 13" (43.2 cm x 33 cm).
- Sold in pairs.
- Compatible with Can-Am ProMount Blades with or without extensions (except for Can-Am ProMount Steel 54" (137 cm) Blade (715004472)).
- Fits: Can-Am ProMount Flex2 60" and Steel 60" and 66" Blades.

G2, G2L, G2S, Maverick Trail, Maverick Sport, Defender, Maverick X  
715004207

**\$149<sup>99</sup>**

## PLASTIC WEAR BLADE

- To help prevent scratches on smooth driveways and markable surfaces.

G2, G2L, G2S, Maverick Trail, Maverick Sport

Can-Am ProMount 54" (137 cm) Plastic Wear Blade  
715004480

**\$99<sup>99</sup>**

Can-Am ProMount 60" (152 cm) Plastic Wear Blade  
715004481

**\$99<sup>99</sup>**

Can-Am ProMount 66" (168 cm) Plastic Wear Blade  
715004482

**\$99<sup>99</sup>**

Can-Am ProMount 72" (183 cm) Plastic Wear Blade  
715004483

**\$159<sup>99</sup>**

## PLOW LIMIT SWITCH

- (Not illustrated)
- For controlling the cable tension when over raising your plow system.
- Prevents winch, plow push frame and vehicle damage.

G2, G2L, G2S, Maverick Trail, Maverick Sport

715004775

**\$134<sup>99</sup>**

Defender, Maverick X3

715006259

**\$134<sup>99</sup>**

## CAN-AM PROMOUNT BLADE EXTENSIONS

- Add 3" (8 cm) each side.
- Compatible with Can-Am ProMount Blades (except for Can-Am ProMount Steel 54" (137 cm) Blade).
- Longer Wear Blade can be installed to go over the extra length given by the extensions.
- Fits: Can-Am ProMount Flex2 60" and Steel 60" and 66" Blades.

G2, G2L, G2S, Maverick Trail, Maverick Sport, Defender, Maverick X

■ 715004205 • Black  
■ 715005319 • Yellow

**\$124<sup>99</sup>**

## PLOW ANGLING SYSTEM

- Converts your plow system into an easy-to-control unit from the driver's seat.
- Allows you to have full up/down and left/right plow control at your fingertips by using the supplied joystick.
- Using one hand to control all plow motions will allow you to easily concentrate and manage your plowing tasks.
- Not compatible with Rancher Front Bumpers and Apache Backcountry Track System.

Compatible with any ProMount Push Frame and Blade  
715006022

**\$1,199<sup>99</sup>**



# SUPER-DUTY PLOW SYSTEM

The Super-Duty plow system and attachments are built to maximize your Defender's capabilities. Built to be extremely robust, efficient at tackling heavy jobs, and resistant to regular use—we call it "super" for a reason.

## 72" (183 CM) SUPER-DUTY PLOW KIT

- A comprehensive plow system with manual lift and angling.
- Ultra-durable 72" (183 cm) blade made of 12-gauge steel with integrated reinforcement and heavy-duty push tubes to tackle the most demanding jobs.
- Requires a winch for raising and lowering.
- Convenient disconnect system for quick and easy installation or removal.
- Front mount provides minimum 11" (28 cm) lift distance.



## THIS KIT INCLUDES:

- 72" (183 cm) Super-Duty Plow (715001292)
- Super-Duty Plow Push Frame (715001293)
- Super-Duty Plow Mounting Kit (715002731)

Defender, Defender MAX

715003416

**\$1,474<sup>97</sup>**

## SUPER-DUTY PLOW KIT shown with the following accessories:

Plow Rubber Flap (715001219)  
Plow Drift Cutter (715001218)  
Plow Edge Markers (715001216)

## PLOW EDGE MARKERS

- (Not illustrated)
- For a more accurate view of the width of your plow.
- Allows you to work closely around objects.

Super-Duty Plow

715001216

**\$44<sup>99</sup>**

## PLOW DRIFT CUTTER

- (Not illustrated)
- Keeps snow securely in the plow.
- Allows you to cut a cleaner pass.
- Sold individually.

Super-Duty Plow

715001218

**\$119<sup>99</sup>**

## SUPER-DUTY PLOW HYDRAULIC ANGLING KIT

- Allows you to have full up/down and left/right plow control at your fingertips.
- Pre-assembled, it comes with everything you need to turn your Super-Duty Plow into a quick, easy-to-control unit from the driver's seat.
- Using one hand to control all plow motions with the supplied joystick will allow you to easily concentrate and manage your plowing tasks.
- With this commercial grade kit, you will send snow exactly where you want reliably all winter long.
- Winch and plow sold separately.

Defender, Defender MAX

715002840

**\$1,579<sup>99</sup>**

## SUPER-DUTY PLOW PUSH FRAME EXTENSION

- (Not illustrated)
- Extension to use the Super-Duty Plow with the Apache 360 LT Track System.
- Comes with Plow Magnetic Switch (715001995) and Plow Pulley (715002042).
- Requires Front Bumper or Front Accessory Bar for installation.

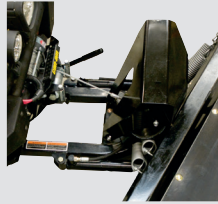
Super-Duty Plow

715001221 • Black

**\$359<sup>99</sup>**



Dual cylinders hydraulic



Electric hydraulic unit

## PLOW BLADE EXTENSIONS

- Side extensions for widening your plow blade by 6" (15 cm) on each side.
- Include rubber flaps for extension parts.
- Sold in pairs.

Super-Duty Plow

715001217

**\$324<sup>99</sup>**



## WARN<sup>†</sup> PLOW ROLLER FAIRLEAD

- Larger diameter lower roller reduces wear on wire rope for plow application.
- For use with Super-Duty Plow.

Super-Duty Plow

715001223

**\$84<sup>99</sup>**



## PLOW PULLEY

- (Not illustrated)
- For use with the Super-Duty Plow.
- Helps winching efficiency.
- Requires Front XT Bumper.

Super-Duty Plow

715002042

**\$64<sup>99</sup>**

## PLOW MAGNETIC SWITCH

- (Not illustrated)
- Magnetic switch that stops the winch to prevent cable, winch and frame damage.
- For use with Super-Duty Plow.

Super-Duty Plow

715001995

**\$124<sup>99</sup>**





VISIT YOUR AUTHORIZED **CAN-AM DEALER** FOR MORE DETAILS OR SHOP ONLINE AT **CAN-AMOFFROAD.COM**

©2019 Bombardier Recreational Products Inc. (BRP). All rights reserved. ®, ™ and the BRP logo are trademarks of BRP or its affiliates. In the U.S.A., products are distributed by BRP US Inc. BRP reserves the right, at any time, to discontinue or change specifications, prices, designs, features, models or equipment without incurring obligation. Some models depicted may include optional equipment. BRP highly recommends that all ATV drivers take a training course. For safety and training information, see your dealer or call the ATV Safety Institute at 1-800-887-2887. ATVs can be hazardous to operate. Never carry passengers on any ATV not specifically designed by the manufacturer for such use. All adult model Can Am ATVs are Category G ATVs (General Use Models) intended for recreational and/or utility use by an operator age 16 or older. For side-by-side vehicles (SxS): Read the BRP side-by-side Operator's Guide and watch the Safety DVD before driving. Fasten lateral net and seat belt at all times. Operator must be at least 16 years old. Passenger must be at least 12 years old and able to hold handgrips and plant feet while seated against the backrest. ATVs and SxS are for off-road use only; never ride on paved surfaces or public roads. For safety reasons, the operator and passenger must wear a helmet, eye protection and other protective clothing. Always remember that riding and alcohol/drugs don't mix. Never engage in stunt driving. Avoid excessive speed and be particularly careful on difficult terrain. Always ride responsibly and safely. Printed in Canada.

**PROMOUNT**  
— PLOWS

**can-am**®